

Sign of the week: 31/10/22

'wh' questions



WHEN?

Fingers wiggle against side of chin. **Eyebrows raised or furrowed for question form.**



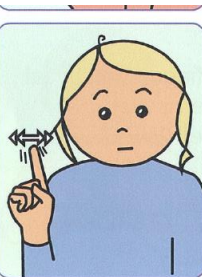
WHERE?

Palm up open hands move in small flat outward circular movements. **Eyebrows raised or furrowed for question form.**



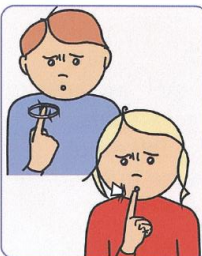
WHICH?

'Y' hand makes small side-to-side movements (directional). **Eyebrows raised or furrowed for question form.**



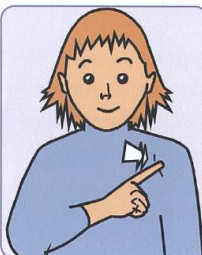
WHAT?

Palm forward extended index finger shakes in short quick side to side movements. **Eyebrows raised or furrowed for question form.**



WHO?

Index finger makes small horizontal circles, palm back **OR** taps chin twice, palm left. **Eyebrows raised or furrowed for question form.**



WHY?

Edge of R. index finger taps left side of chest twice. Also means **because, reason.** **Eyebrows raised or furrowed for question form.**

Here is a short video that will make signs clearer

<https://www.youtube.com/watch?v=IUUbnltlBU0&t=55s>